



## PRODUCT OVERVIEW



Hydraulic Couplings and Valves  
[www.holmbury.com](http://www.holmbury.com)

### HQ & H Series



Flat face couplings made to the ISO 16028 Standard

Body Sizes - 06 - 40  
Thread Sizes - 1/4" - 2"  
Thread Forms -  
BSPP, NPT, SAE,  
METRIC  
Pressure Rating -  
250 - 400 bar | 3625 - 5800 psi  
Material - Carbon Steel  
Plating - Zinc Nickel

### H90 Series



90° Flat face couplings made to the ISO 16028 Standard

Body Sizes - 12  
Thread Sizes - 06 / 12 JIC | 08 SAE  
Pressure Rating -  
350 bar | 5075 psi  
Thread Forms - SAE, JIC  
Material - Carbon Steel  
Plating - Zinc Nickel

### HCP Series



Connect under pressure flat face male couplings made to the ISO 16028 Standard dimensions

Body Sizes - 10 - 19  
Thread Sizes - 3/8" - 1"  
Thread Forms - BSPP, NPT, SAE  
Pressure Rating -  
350 bar | 5075 psi  
Material - Carbon Steel  
Plating - Zinc Nickel

### HP Series

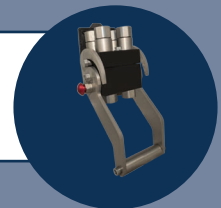


High pressure flat face couplings fitted with a safety locking sleeve

Body Sizes - 10  
Thread Sizes - 3/8"  
Thread Forms - NPTF  
Pressure Rating -  
720 bar | 10440 psi  
Material - Carbon Steel  
Plating - Zinc Nickel

## NEW PRODUCTS

MP Series - Multiplate couplings available with 2, 4, 6 and 8 port connections



HDB Series - Decompression block to replace skid steer OEM block

FFC Series - Replacement cartridge couplings for Faster 4BD4FH/I blocks fitted to skid steer loaders



KM 115/116 Series - High pressure poppet valve couplings up to 1000 bar (115) and 1500 bar (116)



## HFT Series



Screw connect flat face couplings

BOP certified couplings available

Body Sizes - 10 - 32  
Thread Sizes - 3/8" - 1 1/2"  
Thread Forms - BSPP, NPTF, SAE  
Pressure Rating -  
400 - 550 bar | 5800 - 7975 psi  
Material - Carbon Steel  
Plating - Zinc Nickel

## HS Series



General purpose screw connect couplings made to the ISO 14541 Standard

Body Sizes - 04 - 25  
Thread Sizes - 1/4" - 1 1/2"  
Thread Forms -  
BSPP, NPTF, SAE, METRIC  
Pressure Rating -  
300 - 450 bar | 4350 - 6525 psi  
Material - Carbon Steel  
Plating - Trivalent

## HSC Series



Heavy duty screw connect couplings

Body Sizes - 10 - 50  
Thread Sizes - 3/8" - 2"  
Thread Forms - BSPP  
Pressure Rating -  
250 - 500 bar | 3625 - 7250 psi  
Material - Carbon Steel  
Plating - Trivalent

## RH Series



Zero leakage screw connect couplings

Body Sizes - 08 - 25  
Thread Sizes - M14 - M52  
Thread Forms - METRIC  
Pressure Rating -  
350 - 420 bar | 5075 - 6100 psi  
Material - Carbon Steel  
Plating - Zinc Nickel

## PS Series



Extra heavy duty high flow couplings

Body Sizes - 25  
Thread Sizes - 1 1/4" (SAE)  
Connections -  
SAE, 3000 SAE Flange  
Pressure Rating -  
500 bar | 7250 psi  
Material - Carbon Steel  
Plating - Zinc Nickel

## PSP | PSB Series



High pressure screw connect poppet & ball couplings made to the ISO 14540 Standard

Body Sizes - 06 | 10  
Thread Sizes - 1/4" & 3/8"  
Thread Forms - NPT  
Pressure Rating -  
720 bar | 10440 psi (PSB)  
1000 bar | 14500 psi (PSP)  
Material - Carbon Steel  
Plating - Trivalent

## PTC Series



High pressure heavy duty screw connect couplings

Body Sizes - 06 - 50  
Thread Sizes - 1/4" - 2"  
Thread Forms - BSPP, NPT  
Pressure Rating -  
350 - 800 bar | 5075 - 11600 psi  
Material - Carbon Steel  
Plating - Trivalent

## TC Series



Screw connect tipper couplings

Body Sizes - 16 | 19  
Thread Sizes - 3/4" & 1"  
Thread Forms - BSPP  
Pressure Rating -  
300 - 350 bar | 4350 - 5075 psi  
Material - Carbon Steel  
Plating - Trivalent



### LC Series



Heavy duty screw connect couplings

BOP certified couplings available

Body Sizes - 19 - 50  
Thread Sizes - 1/2" - 2"  
Thread Forms - NPT  
Pressure Rating -  
345 bar | 5000 psi  
Material - Carbon Steel  
Plating - Trivalent

### PLC Series



Screw connect and pull break couplings interchangeable with the DIN V series probes

Body Sizes - 10 - 25  
Thread Sizes - 3/8" - 1"  
Thread Forms - BSPP, NPT  
Pressure Rating -  
250 - 300 bar | 3625 - 4350 psi  
Material - Carbon Steel  
Plating - Trivalent

### WSC Series



Brass wing style screw connect couplings with steel nut

Body Sizes - 19 - 40  
Thread Sizes - 1/2" - 1 1/2"  
Thread Forms - NPT  
Pressure Rating -  
175 - 210 bar | 2538 - 3045 psi  
Material - Brass (Cast Steel sleeve)  
Plating - Trivalent  
(Sleeve only)

### HTN Series



Poppet style couplings with a guided poppet

Body Sizes - 06 - 50  
Thread Sizes - 1/4" - 2"  
Thread Forms - BSPP, NPT  
Pressure Rating -  
100 - 450 bar | 1450 - 6527 psi  
Material - Carbon Steel  
Plating - Trivalent

### F Series



Connect under pressure high flow couplings fitted with a safety locking sleeve

Body Sizes - 10 - 25  
Thread Sizes - 3/8" - 1"  
Thread Forms - BSP  
Pressure Rating -  
260 - 350 bar | 3770 - 5075 psi  
Material - Carbon Steel  
Plating - Zinc Nickel

### TB Series



Trailer brake couplings made to the ISO 5676 Standard

Body Sizes - 12  
Thread Sizes - 3/8", 1/2", M18, M20  
Thread Forms - BSPP, SAE, METRIC  
Pressure Rating -  
220 bar | 3190 psi  
Material - Carbon Steel  
Plating - Trivalent

### PWC Series



Free flow, valveless pressure washer couplings

Body Sizes - 10  
Thread Sizes - 3/8"  
Thread Forms - BSPP  
Pressure Rating -  
350 bar | 5075 psi  
Material - Carbon Steel  
Plating - Trivalent

### GGIL | GG90 Series



In-line and 90° rotary couplings

Body Sizes - 06 - 50  
Thread Sizes - 1/4" - 2"  
Thread Forms - BSPP, NPT  
Pressure Rating -  
180 - 400 bar | 2610 - 5801 psi  
Material - Carbon Steel  
Plating - Trivalent

## CV Series



In-line check valves

Body Sizes - 06 - 50  
Thread Sizes - 1/4" - 2"  
Thread Forms -  
BSPP, NPT  
Pressure Rating -  
250 - 400 bar | 2900 - 5800 psi  
Material - Carbon Steel  
Plating - Trivalent

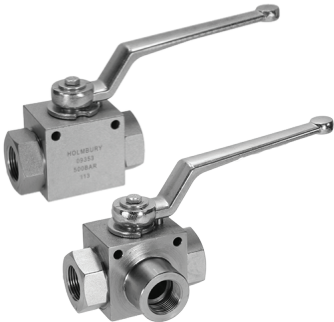
## VPC Series



Hose burst valves & cartridges

Thread Sizes - 1/4" - 1"  
Thread Forms - BSP  
Pressure Rating -  
350 bar | 5075 psi  
Material - Carbon Steel  
Plating - Trivalent

## BVC2 | BVC3 Series



Two and three way high pressure ball valves

Body Sizes - 06 - 50  
Thread Sizes - 1/4" - 2"  
Thread Forms -  
BSPP, NPT, SAE, METRIC  
Pressure Rating -  
350 - 500 bar | 5075 - 7250 psi  
Material - Carbon Steel  
Plating - Trivalent

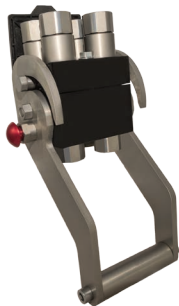
## FFC Series



Replacement cartridge couplings for the Faster 4BD4FH/4BD4FI

Body Sizes - 1/2"  
Thread Sizes - 46mm or 48mm  
Thread Forms - METRIC  
Pressure Rating -  
350 bar | 5075 psi  
Material - Carbon Steel  
Plating - Zinc Nickel

## MP Series



Multiplate couplings

Body Sizes - 10 and 12  
Plate Connections - 2 - 8  
Thread Sizes - 1/2" - 3/4"  
Thread Forms - BSP, NPT, SAE, METRIC  
Pressure Rating -  
350 bar | 5075 psi  
Material (Couplings) - Carbon Steel  
Plating (Couplings) - Zinc Nickel

## HDB Series



HDB- Decompression block

Body Sizes - 12 and 19  
Pressure Rating -  
350 bar | 5075 psi  
Material (Couplings) - Carbon Steel  
Plating (Couplings) - Zinc Nickel

## KM 115/116 Series



High pressure poppet valve couplings

Body Sizes - 02  
Thread Sizes - 1/4"  
Thread Forms - BSPP, NPTF  
Pressure Rating -  
1000 bar | 14500 psi (115)  
1500 bar | 21500 psi (116)  
Material - Carbon Steel  
Plating - Zinc Nickel Grey (115), Black (116)

## Accessories



Range of accessories available including:

Dust caps & plugs  
Parking stations  
Seal kits  
Repair kits  
Valve handles  
Valve locking kits

### HSS Series



Stainless steel flat face couplings made to the ISO 16028 Standard dimensions

Body Sizes - 06 - 40  
Thread Sizes - 1/4" - 2"  
Thread Forms - BSPP, NPT  
Pressure Rating -  
175 - 350 bar | 2538 - 5075 psi  
Material - AISI 316

### SHS Series



Stainless steel general purpose screw connect couplings made to the ISO 14541 Standard dimensions

Body Sizes - 04 - 25  
Thread Sizes - 1/4" - 1 1/2"  
Thread Forms - BSPP, NPT, SAE  
Pressure Rating -  
150 - 300 bar | 2175 - 4350 psi  
Material - AISI 316

### IAS Series



Stainless steel ISO A couplings made to the ISO 7241:2014 Series A Standard dimensions

Body Sizes - 06 - 50  
Thread Sizes - 1/4" - 2"  
Thread Forms - BSPP, NPT  
Pressure Rating -  
90 - 300 bar | 1305 - 4350 psi  
Material - Stainless Steel

### IBS Series



Stainless steel ISO B couplings made to the ISO 7241:2014 Series B Standard dimensions

Body Sizes - 06 - 50  
Thread Sizes - 1/8" - 2"  
Thread Forms - BSP, NPT  
Pressure Rating -  
90 - 300 bar | 1305 - 4350 psi  
Material - Stainless Steel

### PTS Series



Stainless steel high pressure heavy duty screw connect couplings

Body Sizes - 06 - 50  
Thread Sizes - 1/4" - 2"  
Thread Forms - BSPP, NPT, SAE  
Pressure Rating -  
300 - 700 bar | 4350 - 10150 psi  
Material - AISI 316

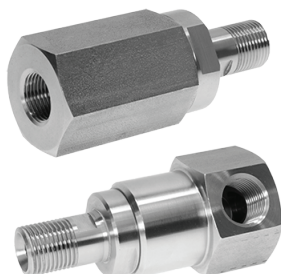
### CVS Series



Stainless steel in-line check valves

Body Sizes - 06 - 50  
Thread Sizes - 1/4" - 2"  
Thread Forms - BSPP  
Pressure Rating -  
200 - 350 bar | 2900 - 5075 psi  
Material - AISI 316

### SRIL | SR90 Series



Stainless steel in-line and 90° rotary couplings

Body Sizes - 06 - 50  
Thread Sizes - 1/4" - 2"  
Thread Forms - BSPP, NPT, SAE  
Pressure Rating -  
150 - 350 bar | 2175 - 5075 psi  
Material - AISI 316

### BVS2 | BVS3 Series



Stainless steel two and three way high pressure ball valves

Body Sizes - 06 - 50  
Thread Sizes - 1/4" - 2"  
Thread Forms - BSP, NPT  
Pressure Rating -  
315 - 500 bar | 4568 - 7250 psi  
Material - AISI 316



### IA Series



ISO A couplings made to the ISO 7241:2014 Series A Standard

Body Sizes - 06 - 50  
Thread Sizes - 1/4" - 2"  
Thread Forms - BSPP, NPT, SAE, METRIC  
Pressure Rating - 170 - 400 bar | 2465 - 5800 psi  
Material - Carbon Steel  
Plating - Trivalent | Optional Zinc Nickel

### Ford Coupling



DIN style coupling also known commonly as the "ford coupling". Made to the ISO 7241:2014 Series A and ISO 5675 Standards

Body Sizes - 12  
Thread Sizes - 1/2"  
Thread Forms - BSP, NPT, SAE  
Pressure Rating - 320 bar | 4640 psi  
Material - Carbon Steel  
Plating - Trivalent | Optional Zinc Nickel

### IB Series



ISO B couplings made to the ISO 7241:2014 Series B Standard

Body Sizes - 04 - 50  
Thread Sizes - 1/8" - 2"  
Thread Forms - BSPP, NPT, SAE  
Pressure Rating - 100 - 500 bar | 1450 - 7250 psi  
Material - Carbon Steel  
Plating - Trivalent | Optional Zinc Nickel

### IBB Series



Brass ISO B couplings made to the ISO 7241-2014 Series B dimensions

Body Sizes - 04 - 25  
Thread Sizes - 1/8" - 1"  
Thread Forms - BSPP, NPT  
Pressure Rating - 140 - 210 bar | 2030 - 3045 psi  
Material - Brass

### IAP Series



Connect under pressure female couplings (Connects to 1/2" ISO A male probes)

Body Sizes - 12  
Thread Size - M22"  
Thread Forms - METRIC  
Pressure Rating - 300 bar | 4350 psi  
Material - Carbon Steel  
Plating - Trivalent

### P Series



ISO A push / pull female couplings (Connects to 1/2" ISO A male probes)

Body Sizes - 12  
Thread Sizes - 1/2 & 5/8"  
Thread Forms - BSPP, NPT, SAE, METRIC  
Pressure Rating - 320 bar | 4640 psi  
Material - Carbon Steel  
Plating - Trivalent

### IAPC Series



Connect under pressure ISO A couplings made to the ISO 7241-2014 Series A Standard

Body Sizes - 12  
Thread Sizes - 1/2"  
Thread Forms - BSPP  
Pressure Rating - 320 bar | 4640 psi  
Material - Carbon Steel  
Plating - Trivalent

### DINV | DINB Series



Poppet and ball style couplings made to the ISO 5675 Standard (Standard only on 1/2" worldwide & 3/4" in Europe)

Body Sizes - 06 - 25  
Thread Sizes - 1/4" - 1"  
Thread Forms - BSPP  
Pressure Rating - 250 - 375 bar | 3625 - 5437 psi  
Material - Carbon Steel  
Plating - Trivalent | Optional Zinc Nickel





# HOLMBURY

## Distributor details:

### HOLMBURY LTD

Premier House, 1 Vale Rise  
Tonbridge, Kent, TN9 1TB  
United Kingdom

Tel: +44 (0) 1732 378912  
Fax: +44 (0) 1732 357666  
Email: [sales@holmbury.com](mailto:sales@holmbury.com)  
Web: [www.holmbury.com/gb](http://www.holmbury.com/gb)



### HOLMBURY INC

33801 Curtis Blvd, Suite 104  
Eastlake, OH 44095  
United States of America

Tel: +1 (866) 465-6287  
Fax: +1 (440) 578-1073  
Email: [couplings@holmburyusa.com](mailto:couplings@holmburyusa.com)  
Web: [www.holmbury.com/us](http://www.holmbury.com/us)

